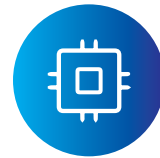


# SEMICONDUCTORS



The semiconductor subsector is relatively small in Kanata North and is almost entirely foreign owned with no fabrication facilities but with a high amount of design work taking place here.

## EXPORT RATIO

The export ratio is relatively low at 35%.

## PRODUCTIVITY

Productivity is estimated at \$436,000 annual sales per employee with \$270.1 million in revenues and 619 workers.

## EMPLOYMENT

Labour costs are estimated at 40% of total revenues with 75% of positions at the professional level 25% technical.

## LOCAL/REGIONAL SPENDING

EBITDA is estimated at 20%.

# 2018

2015

Change since 2015

## REVENUES

**\$270 MILLION**

\$229 MILLION

+18%

## REVENUE/EMPLOYEE

**\$436,374**

\$464,541

-7%

## # OF EMPLOYEES

**619**

493

+26%

## # OF FIRMS

**14**

12

+17%

## EXPORT RATIO

**35%**